

sueloradianteinox | stainless steel heating plates

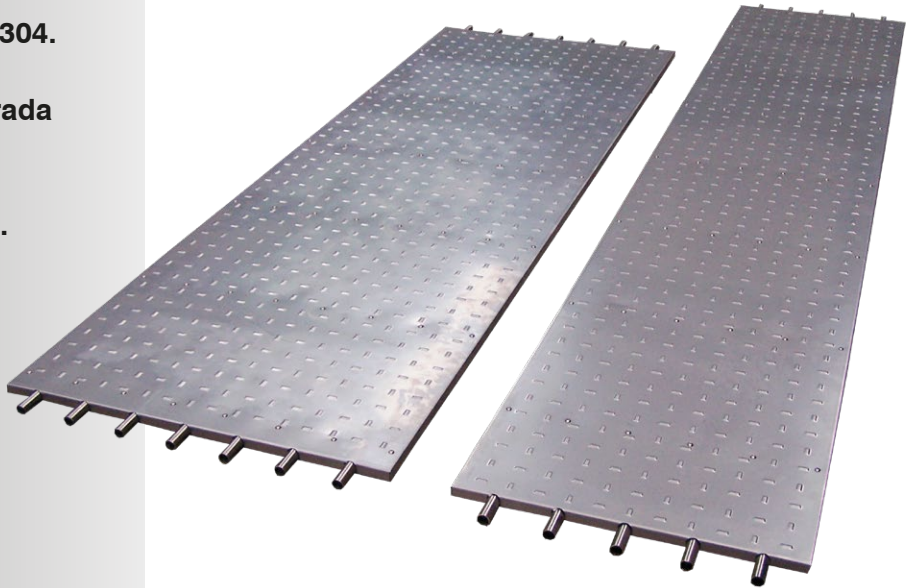
calefacción en destete / heating for weaners

|ES|

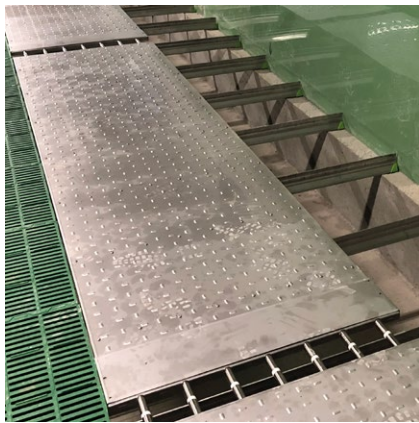
- Fabricación en acero inoxidable AISI 304.
- Superficie antideslizante.
- Serpentin inox Ø20 y conexiones entrada Ø20x3/4 Hembra.
- Ligera, robusta y de fácil instalación.
- Gran rendimiento, consumo reducido.
- Medidas estándar: 2900x600x20mm.
2900x700x20mm.
2900x800x20mm.

|EN|

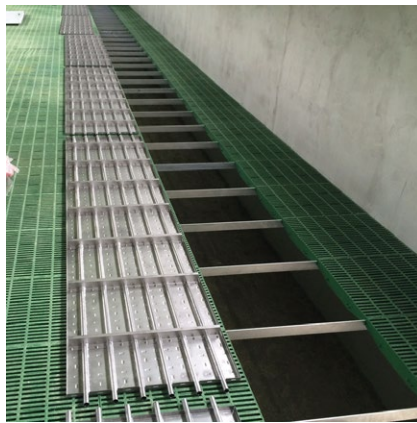
- Manufactured in stainless steel AISI304.
- Anti-slip surface.
- Stainless steel heating pipe Ø22 and connections PBT 3/4F.
- Light, strong and easy to install.
- Great efficiency, minimum consumption.
- Standard sizes: 2900x600x20mm.
2900x700x20mm.
2900x800x20mm.



Conector terrain tubo-tubo Ø20
Terrain connector pipe-pipe Ø20



Superficie antideslizante
Anti-slip surface



Serpentin tubo Ø20 inox
Stainless steel Ø20 pipe



Conexiones PB Ø20x3/4
PBT Ø20x3/4 F connections

 **ERRA**

es bienestar animal... / is animal welfare...



Erra Tecni-Ram SL

www.erra.es

erra@erra.es

Tel. +34 93 889 3511

Parc d'Activitats Econòmiques

C/Mas de la Mora, 3

08500 Vic (Barcelona)

Spain

